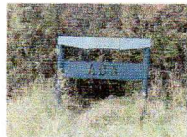


Cut Knife and Districts School Sites and Points of Interest Locations

1. Ada SD #5074

1935 -1961

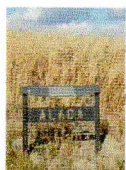
GPS: N52° 42.237' W109° 21.996'



2. Alada SD #2955

1914 – 1965

GPS: N52° 47.037' W109° 21.996'



3. Alfred SD #4853

1919-1956

GPS: N52° 47.052' W109° 06.043'



4. Baldwinton Cemetery

GPS: N52° 47.514 W109° 15.813



5. Baldwinton SD #4762

1929-1965

GPS: N52° 47'.233 W109° 15.813



6. Big Rock at Clone

GPS: N52° 36.616' W108° 50.147'



7. Carruthers Catholic Cemetery

GPS: N52° 52.296' W109° 16.206'



8. Carruthers Hillcrest Cemetery

GPS N52° 52.019' W109° 16.204



9. Carruthers SD #3249

1915-1958

GPS: N52° 52.072' W109° 15.793



10. Clayton McLain Memorial Museum

GPS: N52° 44.709' W109° 01.572'



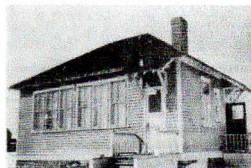
Cut Knife and Districts School Sites and Points of Interest Locations

11. MAAC (Museum Administration and Archives Center)



GPS: N52°44.598' W109° 01.415'

1923 - 1958

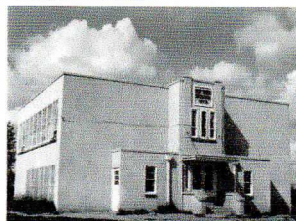


12. Cloan Townsite and Ovenstown (2nd Site) SD#1802

Years for Post Office: 1912-1968
NW11-44-20 W of 3rd.
Years for School at Cloan: 1947-1968
GPS: N52°36.319' W108° 50.805'



1949 - 1966



GPS: N52° 44.716' W109° 00.978'

13. Cut Knife Cemetery

GPS: N52° 43.948' W109° 00.216'

1958 - Present

Elementary School

GPS: N52° 44.754' W109° 01.042

14. Cut Knife SD #1992

1908 - 1917

Original School: SE 5-44-21 W3rd

No signage



1917-1949

Moved to townsite of Cut Knife

GPS: N52° 44.716' W109° 00.949'



1966- Present

High School

GPS: N52° 44.671' W109° 00.849'

15. Dufferin SD#1888

1908-1957

GPS: N52° 41.800' W109° 02.396'



16. Formby SD#

GPS: N52° 54.022' N109° 11.097'

No signage

Cut Knife and Districts School Sites and Points of Interest Locations

Building now located at Clayton McLain Memorial Museum

17. Gallivan SD #3857

1917-1958

GPS: N52° 44.544' W108°49.975'



Original school (on right) now on museum grounds in Cut Knife.

21. Riding Hill SD #2326

1910-1965

GPS: N52° 47.018' W 108°48.607'



18. Irene SD #2157

1910-1942

GPS: N52° 46.608' W109° 13.290'



22. Rockhaven Cemetery

GPS: N52° 41.809' W108° 51.503'

23. Rockhaven SD #3707

1916-66

GPS: N52° 40.341 W108° 52.412



19. Madawaska #2238

1909-1952

GPS: N52° 38.307' W109°02.279'



24. Rosemound SD #3445

1917-1946

GPS: 52° 45.832' W108° 54.427'



20. Ovenstown SD #1902 (Site 1)

1906-1947

GPS: N52° 38.319' W108°48.170'



25. Stringer SD #1825

1908-1939

GPS: N52° 41.759' W108° 51.503'



Cut Knife and Districts School Sites and Points of Interest Locations

26. Thule SD # 4312

GPS: N52° 38.375' W109° 03.113'



27. Triple Lakes SD #3056

1916-1939

NW11-45-20 W of 3rd.

GPS: N52° 51.846' W108° 48.597



28. Vance SD #180

1911-1964

GPS: N52° 41.782' W109° 14.742'



29. Wardenville SD #2479

1910-1958

GPS: N52° 50.534' W109° 09.737'

No sign



30. Wembley SD #4437

1924-1959

GPS: N52° 50.972' W109° 03.113'

No Sign

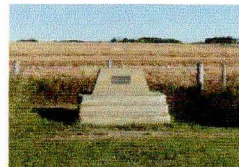


31. Weewona SD #855

1913-1953

GPS: N52° 38.316' W108° 55.147'

SW 1/4 26-42-21



32. Wilbert SD #2357

1910-1952

GPS: N52° 43.093' W109° 08.961'



33. Willowview SD #4597

SE 6-19-43 W of 3rd

GPS: N52° 40.059' W108° 44.274'

No Sign

34. World's Largest Tomahawk

Tomahawk Park, Cut Knife, Saskatchewan

GPS: N52° 44.644' W109° 01.594

